

Loreto Grammar School



Department of
Education
www.deni.gov.uk
AN ROINN
Oideachais
MÄNNYSTRIE O
Lear

omaghlisanellycampus.org

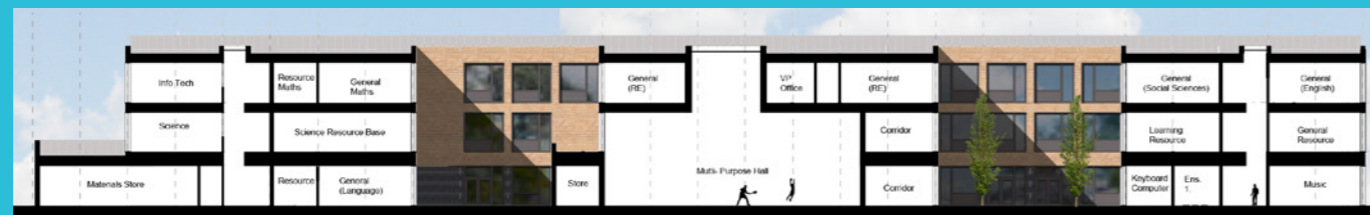
Lisanelly
Shared
Education
Campus
Omagh



Draft Main Elevation to Boulevard



Draft Side Elevation



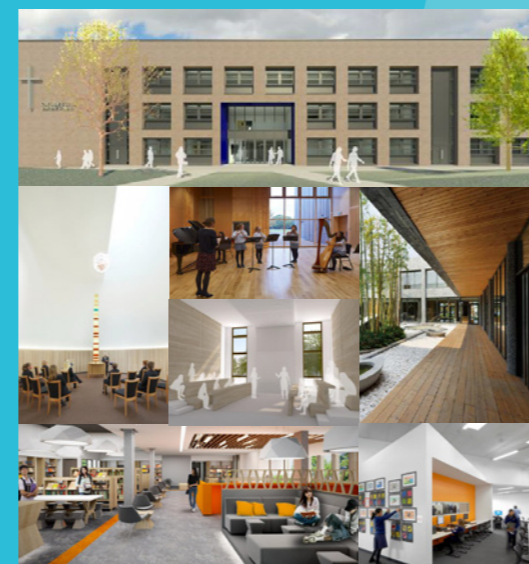
Draft Section AA

Loreto Grammar School presents itself as an impressive building with a dominant entrance portal, sitting broadside to the Boulevard and enjoying a pleasant southerly aspect facing the Shared Education Centre.

The centralised multi-purpose hall and the two flanking internal landscaped courtyards give a structured order to the internal layout on all levels. The multi-purpose hall shares one of these courtyards with the Dining Centre and offers a welcoming break-out space at the heart of the school on the ground floor.

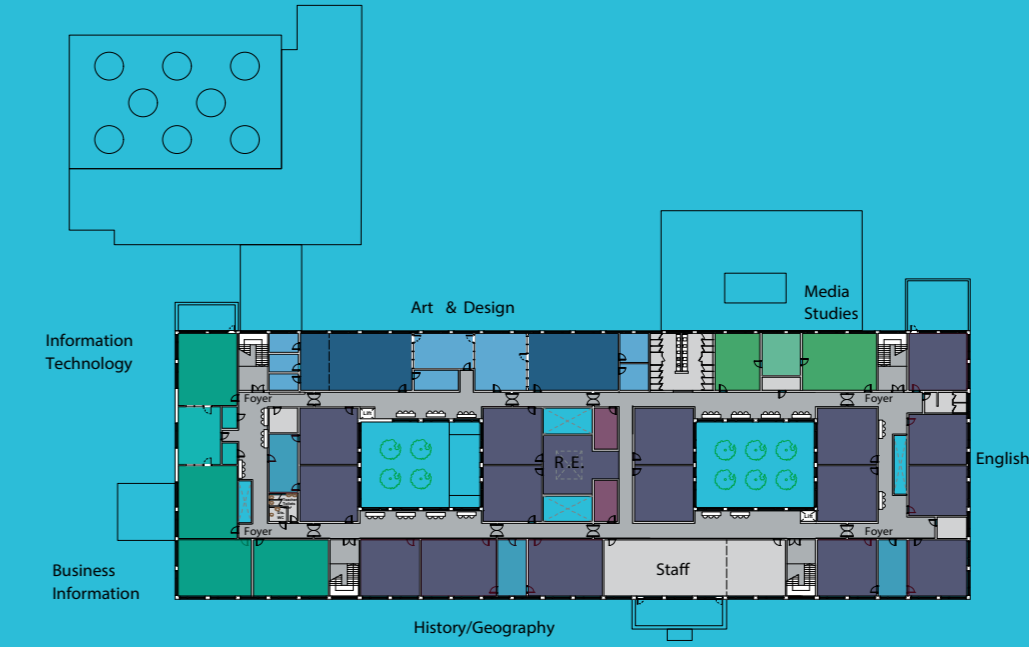
A range of different clustering arrangements for specialist subject classrooms have been designed, not only to work on the same floor but also vertically stacked one above the other. The Library is located on the first floor, with its attendant complimentary suites of accommodation to create a soft heart and the importance of a sense of "place" in the school environment.

The history and tradition of the School are embedded in what it has to offer by way of its unique and quality curriculum. Varied opportunities for social interaction and skills and confidence building have also been recognised along the provision of pastoral care in the form of a Religious Education suite with a "faith space"

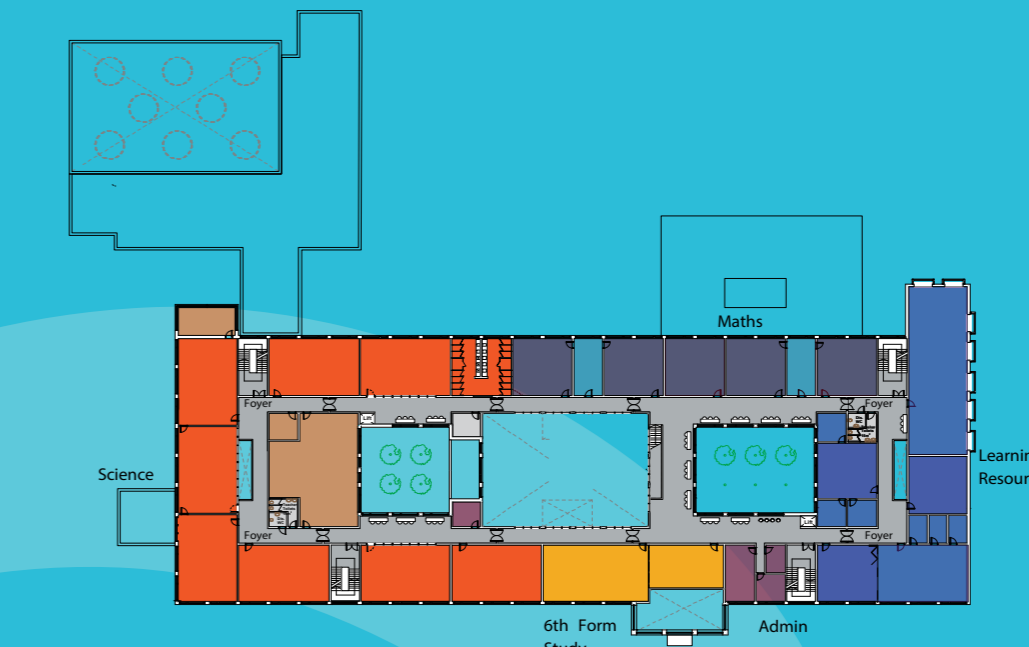


THERE'S THE GROVE OF LISANELLY AND THE CHURCHYARD IN THE VALLEY
AND CIRCLED BY ITS HAWTHORN HEDGE I CAN SEE THE LITTLE SCHOOL
Robert Crawford Local Poet c.1925

- Administration
- Learning Resource
- School Meals
- Music
- Technology & Design
- Physical Education
- Science
- General Classrooms
- Information Technology
- Art and Design
- Home Economics
- 6th Form Accommodation
- Service Cores



Second Floor Plan



First Floor Plan



Ground Floor Plan